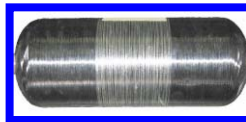




# Shearography / Holography Application Photo Gallery



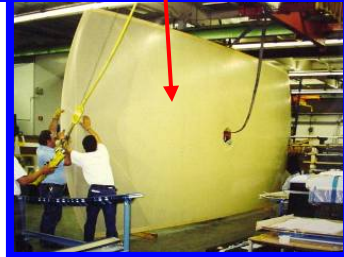
Global Hawk Chin Fairing



COPV Tanks



747 Wing Panel



Aircraft Radome



F-16 Aircraft



F-22 Aircraft



B2 Bomber



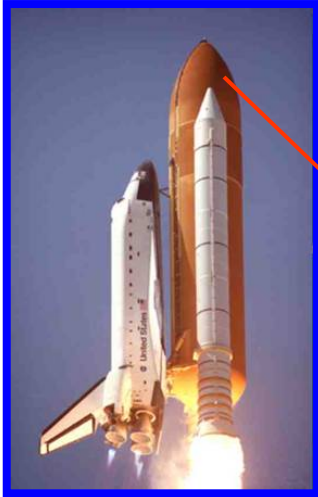
Concorde



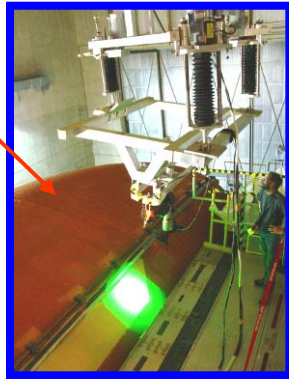
Wing Elevons Inspection



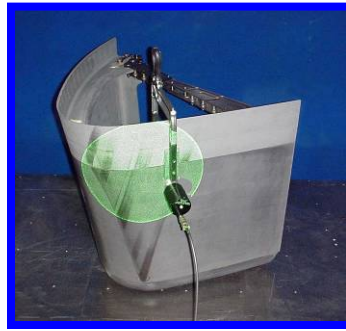
# Shearography / Holography Application Photo Gallery



Shuttle Solid Rocket Boosters



Shuttle External Tank



Shuttle RCC Panel



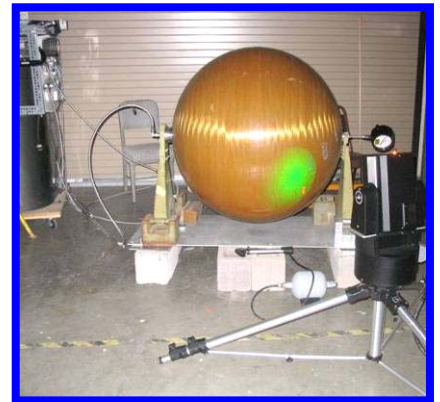
Space Station Equipment Pallet



X33 Filament Wound Graphite Strut



Shuttle RMS Composite Boom



Shuttle OMS Helium Tank



SRB Separation Motor



Missile Fairings



Boeing Delta IV



Shuttle Payload Bay Door Inspection



# Shearography / Holography Application Photo Gallery



Boeing 787



Kockums Visby Corvette  
All Composite Ship



RNLI Lifeboats



Boeing 757 Spoiler



Racing Boat Hull Inspection



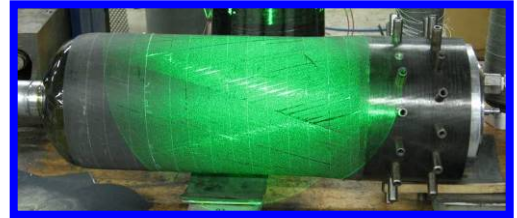
Boat Inspections



Helicopter Blade Inspection



Fiber Wound Rocket Motor Case



Wedgetail



Premier 1 Aircraft Fuselage



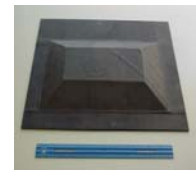
Tire Inspection



Felt Metal Abraidable Compressor Seals



Honeycomb Compressor Seal



Graphite Skin/Nomex  
Honeycomb Aircraft Panel



# Shearography / Holography Application Photo Gallery



Jet Engine Abraidable Seal Inspection



Trent 9000 Fan Case



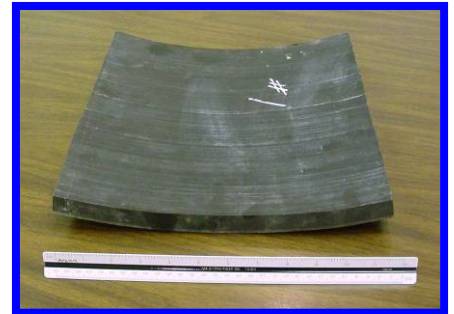
V25 Tail Cone



F100 Bearing Seal



Honeycomb Compressor Seals



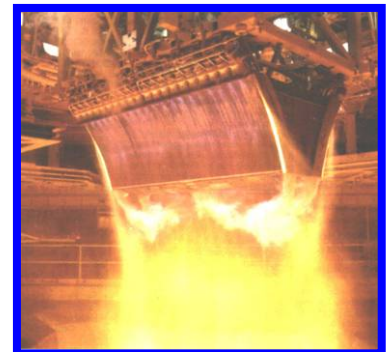
Carbon-Carbon Rocket Motor Exit Cone Sample



Tay Fan Case Shearography Inspection



Honeycomb Seals on Stator Vane Clusters



XRS-2400 Engine



787 Carbon Fiber Window Frame



C-17 Aircraft



Implants