



## Model DH-8000

### Digital Holography Inspection System

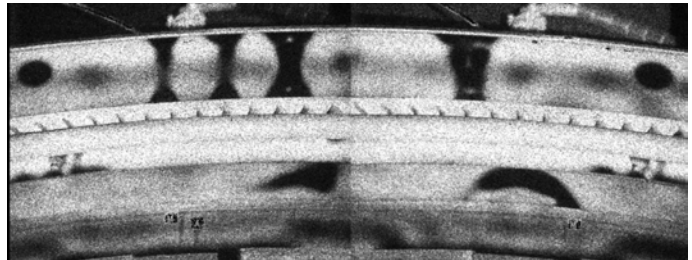


#### System Features:

- Full Automatic Production Testing
- Mega Pixel Camera w/Laser Zoom
- Test Modes: Manual, Automatic & R&D
- Adjustable Fixture to fit all abradable shrouds, felt metal rings and seals also ring sections
- Zero Maintenance, 15,000 hr.
- Solid-State 150mw Laser
- Easy part set-up
- Image analysis tools
- Windows Operation
- LAN and Bar-Code optional
- Honeycomb Seal NDI Capability
- RTM Composites NDI Capability
- Designed and built in the USA

#### Materials / Applications:

- Felt Metal Abradable Rings
- Honeycomb Seal Rings
- Plasma Sprayed Abradable Seals
- Abradable Shroud Rings & Seals
- RTM Composites
- Vane Clusters



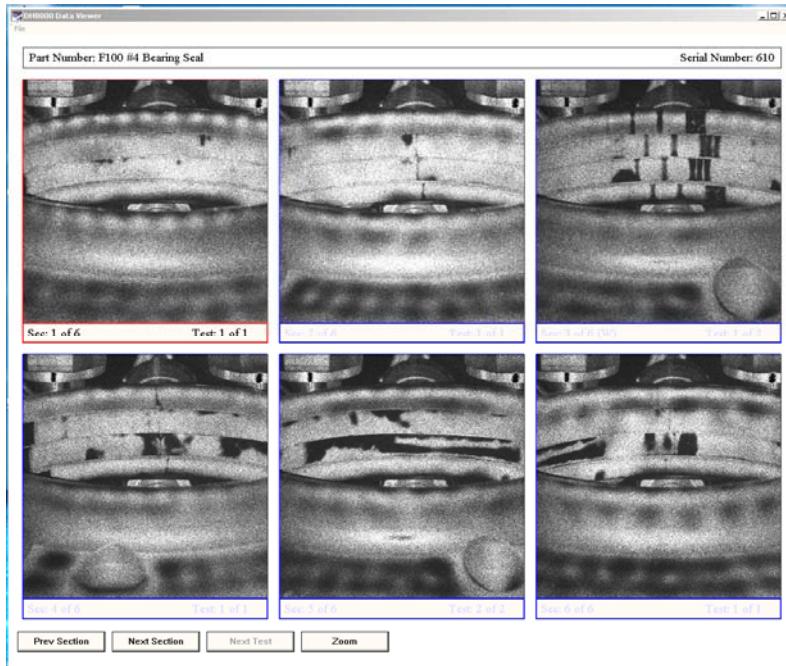
Feltmetal Holography Image

#### Inspection System Benefits:

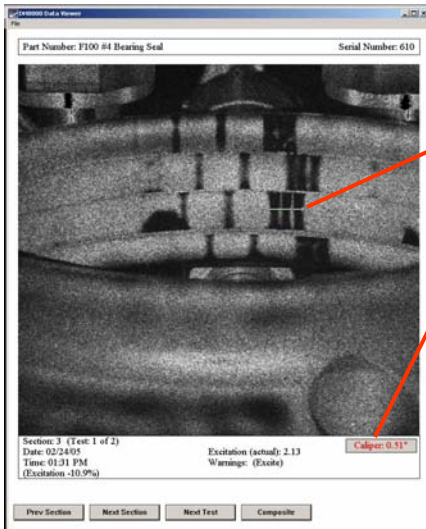
- Programmable for easy operator setup and use
- Supervisory and Operator Level system programs
- Optimizes inspection time
- Save and Recall multiple part test setups
- Archive images
- Windows operating system & software
- Complete with system diagnostics



## Post Analysis Image Evaluation



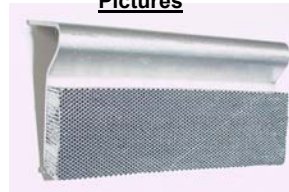
Complete Feltmetal Ring Test Image Display



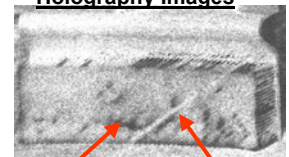
Measurement Tool, Size & Area

### Honeycomb Compressor Seals

Pictures

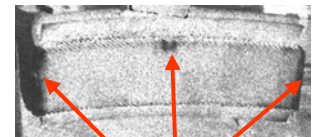


Holography Images



Disbonds

Splice Joint



Disbonds

**Meets Industry Standards i.e.:**

**The DH-8000 meets Pratt & Whitney Aircraft Specification BTM-11 Holography.**

**As an example, has inspected both F100 and JT9-D engine components and F117 RTM compressor stators.**